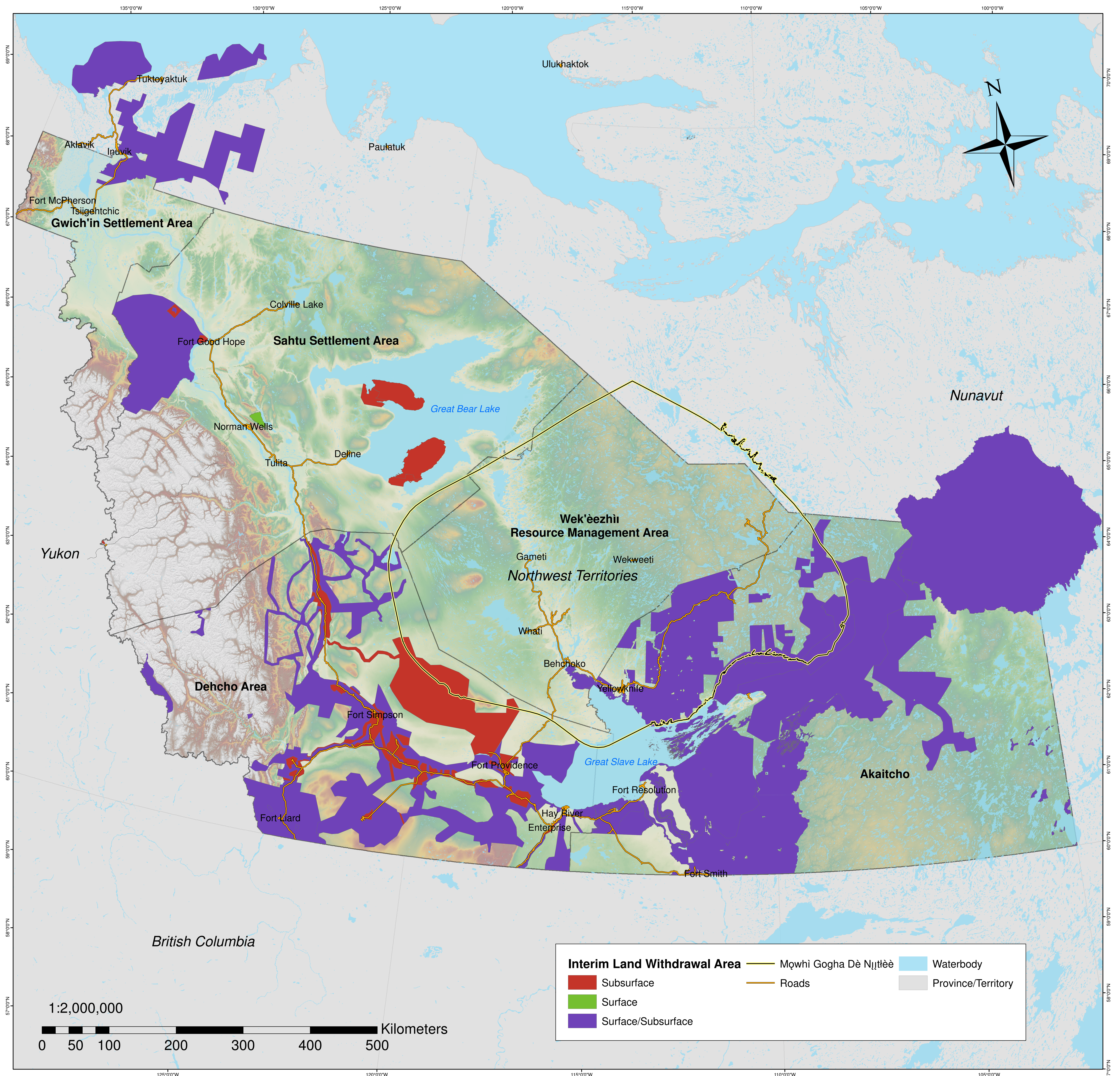


# Interim Land Withdrawal Areas in the NWT



## Map Description:

This map demonstrates the land withdrawal areas in the Northwest Territories.

This map is for illustrative purposes only. This is not a legal document, and should not be treated as such.

## Data Source:

Land Withdrawal Areas (accessed May 30, 2017);  
Place Name, Water, River, Land, Ocean (NRC Jan 1, 2009);  
M̱owhi Gogha Dè Ṉı̄ttlèè (accessed AANDC Jun 10, 2015);  
Settlement Area (Oct 3, 2016).

Map Produced: May 30, 2017

## Map Information:

Coordinate System: NAD 1983  
Northwest Territories Lambert  
Projection: Lambert Conformal Conic  
Datum: North American 1983  
False Easting: 0.0000  
False Northing: 0.0000  
Central Meridian: -112.0000  
Standard Parallel 1: 62.0000  
Standard Parallel 2: 70.0000  
Latitude Of Origin: 0.0000  
Units: Meter

This map is created by the Sahtu Land and Water Board. For mapping related questions, please contact:

Jacqueline Ho  
Regulatory Technician  
Sahtu Land and Water Board  
867 766 7465  
Jacqueline.ho@slwb.com

